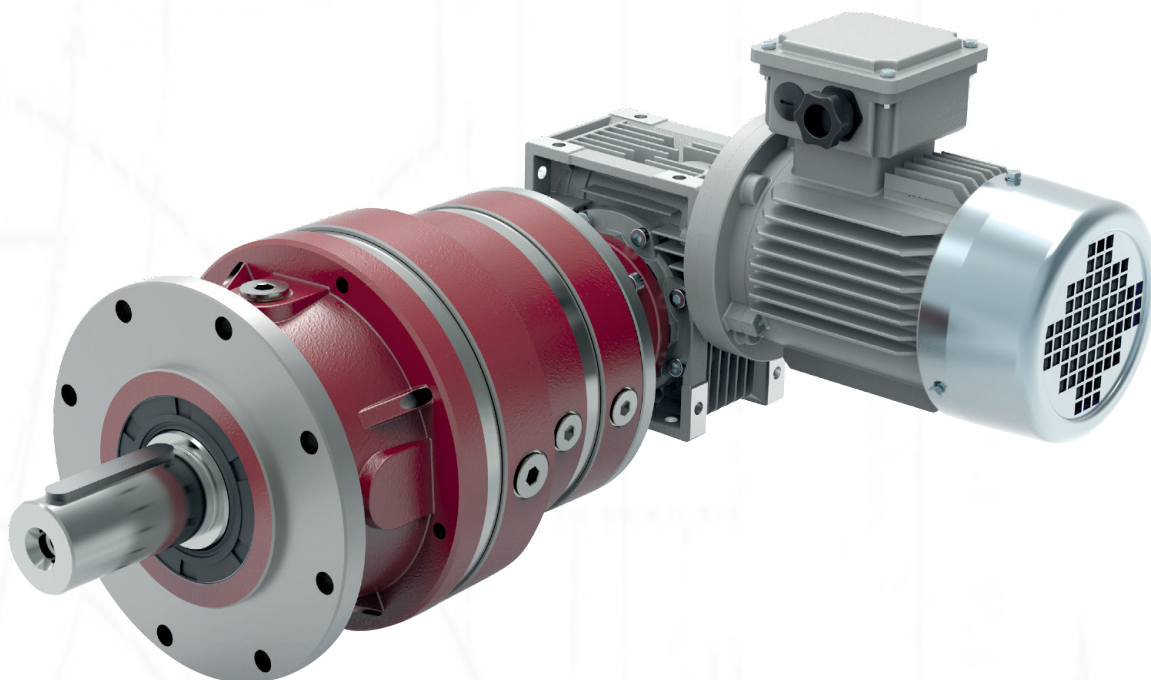




CHIARAVALLI'S MOTOR & GEARBOXES



With a wide range of product, our gearboxes are suitable for multiple industrial applications, such as textile manufacturing , agriculture, Oil & Gas, moving conveyors, as well food production.

Our products range covers aluminium gearboxes, cast iron and planetary gearboxes up to 90.000 Nm.

CHT Motors are engineered to match our gearboxes, so all of their properties are extremely suitable for that purpose.

Stainless steel motors are available on demand.



ALUMINIUM GEARBOXES & CAST IRON GEARBOXES



ALUMINIUM GEARBOXES

Worm gearboxes are fully interchangeable with several pre-existing models, enabling user-friendly installation.

Available with worm screw, helical bevel, coaxial or speed variators.



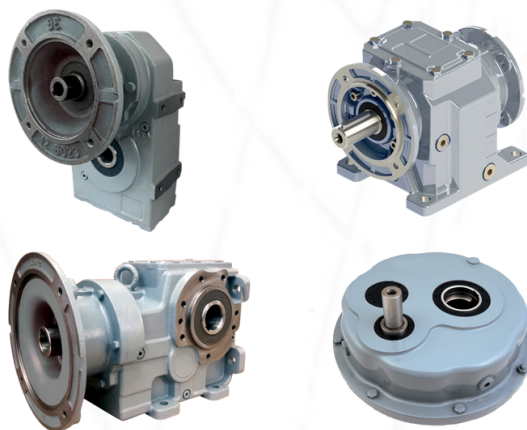
Scan to access our online product catalogue

CAST IRON GEARBOXES

Designed to offer the highest level of reliability, even in particularly severe operating condition.

They guarantee remarkably versatile condition thanks to an universal case.

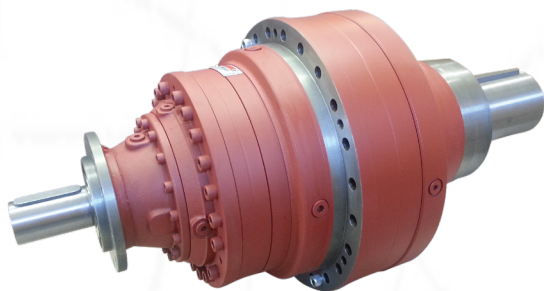
Available with coaxial, helical bevel and parallel axis, including lubrication.



Scan to access our online product catalogue



PLANETARY GEARBOXES & RIGHT ANGLE



PLANETARY GEARBOXES

High reliability, compact volumes and easy anti-rust construction are among the key advantages of CHIARAVALLI's gearboxes.

Modular construction aimed for multi-mode coupling with bevel gears, worm gears, hydraulic brakes, as well variety of input shafts and a wide choice of coupling flanges for hydraulic and electric motors.



Scan to access our online product catalogue

RIGHT ANGLE GEARBOXES

Our right angles drives are ALU-designed for heavy duty industrial purposes where a rotary motion is transmitted between axes arranged perpendicularly.

The CHQ range offers several transmissions ratios & maximum load capacity.



Scan to access our online product catalogue

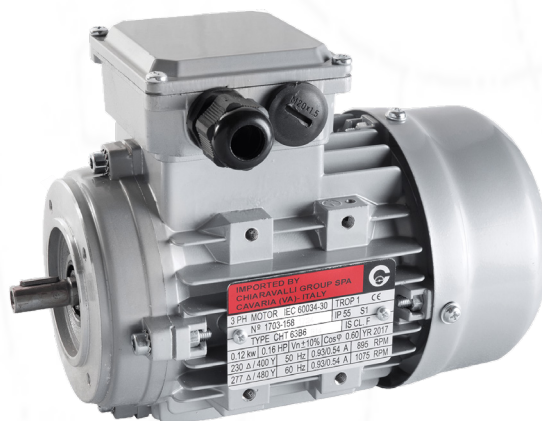
ELECTRIC MOTORS & STAINLESS STEEL MOTORS



ELECTRIC MOTORS

CHT motors range grant top gearboxes compatibility for multi-purpose applications.

CHT 2-4-6 poles motors provide great flexibility featuring heavy-duty epoxy powder coated construction, IP 55 protection class, efficiency from IE1 to IE3, as well as many connection possibilities and/or mounting options. Suitable for operation with braking-device and inverters.



Scan to access our online product catalogue

STAINLESS STEEL MOTORS

Designed for industries requiring high hygiene standards and other application where washdowns are strong and frequent.

These motors can withstand any critical operation conduction where washdowns are made with high temperature and pressure or aggressive cleaning agents.



Scan to directly contact our sales team